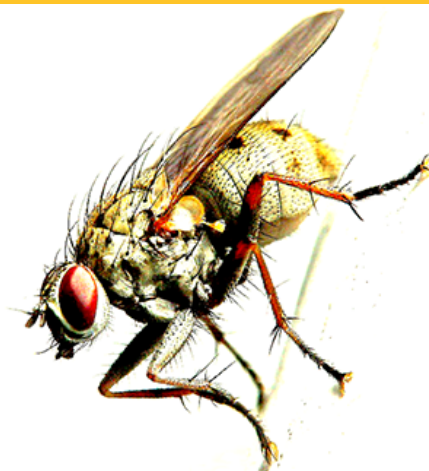


M REED CONE DMD, MS, CDT, FACP

A FLY ON THE WALL

AN IN-DEPTH BEHIND THE SCENES LOOK AT A SUCCESSFUL RELATIONSHIP BETWEEN
A DENTAL LABORATORY TECHNICIAN AND DENTIST



Friday, May 14, 2021

a maximum of 7 clinical hours (lecture) | AGD #610 (3.5 hours), #670 (3.5 hours) | #07-21-Video*
Sign-In: 8:30-9:00 am (CST) | Course Starts: 9:00 am (CST)

Registration Fees:

	Early Bird <i>(BY 12:00 pm / noon CST 4/2/21)</i>	Regular <i>(BY 12:00 pm / noon CST 5/7/21)</i>	Late <i>(AFTER 12:00 pm / noon CST 5/7/21)</i>
Dentist:	\$310	\$340	\$365
Hygienist/Lab Technician:	\$185	\$215	\$240
Dental Assistant:	\$100	\$120	\$145

* LSUCDE video courses are live-streamed via BlueJeans. CE administrators perform roll call and random check-ins via the chat window in BlueJeans. If you miss one or more check-ins it could affect your credits. Before the course you will receive three links: a link to the meeting, a link to a short test, and a link to a course evaluation. You must submit the test and evaluation in order to receive credit. The Louisiana State Board of Dentistry counts CE hours earned through LSUCDE live video conference as in-person hours.

REGISTER TODAY!

Online: www.lsucde.org
Phone: (504) 941-8193

OVERVIEW

Lines of communication between the laboratory technician and the dentists they work with are frequently marked by antagonism and derision. More so than the damage to the fragile egos of these professionals are the potential negative ramifications for treating patients that arise and are difficult to deal with. The goal of this course is to explain the inner workings of an effective and amicable collaboration between colleagues to promote and maintain the oral health of others.

LEARNING OBJECTIVES

After attending this course, participants should be better able to:

- Resolve roadblocks that exist between clinician and technician that may hinder the successful treatment of patients;
- Develop communications systems between laboratory and clinic to facilitate aspects of final impressions, shade analysis, and treatment planning;
- Identify the chairside/benchttop communications protocols and materials currently available which can be utilized in fixed, implant, and removable restorative treatment plans to ensure the highest quality final product at delivery; and
- Implement new concepts and techniques with the clinic and laboratory.

ABOUT THE PRESENTER



A graduate of Tufts University School of Dental Medicine, **M. Reed Cone, DMD, MS, CDT, FACP** completed a three-year Prosthodontic residency program while serving in the U.S. Army with the rank of Major. In addition to achieving board certification and diplomate status as a prosthodontist, he also successfully completed the requirements to earn the designation of Certified Dental Technician. Dr. Cone is the owner and co-founder of Nuance Dental Specialists, a private practice dental clinic limited to prosthetic dentistry in Portland, Maine; and, he serves as Editor-in-Chief of the American College of Prosthodontists quarterly publication, The Messenger. He also lectures nationally and internationally and publishes extensively in peer-reviewed journals.



Continuing Education
Recognition Program

LSU Health New Orleans Continuing Dental Education is an ADA CERP Recognized Provider. ADA CERP is a service of the American Dental Association to assist dental professionals in identifying quality providers of continuing dental education. ADA CERP does not approve or endorse individual courses or instructors, nor does it imply acceptance of credit hours by boards of dentistry. Concerns or complaints about a CE provider may be directed to the provider or to the Commission for Continuing Education Provider Recognition at ADA.org/CERP.

